

UNITED WAY OF



WAYNE COUNTY

2023 School Campaign Coordinator Handbook

Hand Raiser
Problem Solver
Difference Maker
Game Changer

Hand Raiser
Problem Solver
Difference Maker
Game Changer

VOLUNTEER

UNITED, WE'RE

THE STORY

 F CHANGE



EDUCATION



FINANCIAL
STABILITY



BASIC
NEEDS



HEALTH &
WELLNESS

Getting to Know United Way of Wayne County

Your United Way of Wayne County (UWWC) was founded in 1925 and for more than 90 years has been meeting the needs of your community. We are governed by a local Board of Directors, require outcome measurements for all of our 20 funded programs and partner with 14 community agencies.

While 100% of all resources remain in Wayne County, UWWC does much more than provide dollars. We identify community issues and assemble community groups to develop strategic initiatives. We invest in effective programs and collaborative solution that make a stronger community.

Our Vision: *Be the Leader in creating long-term positive change with measurable impact in our community*

Our Mission: *Unite people and resources to improve and strengthen our community*

Our Values: **Accountable** to investors by spending donated funds in a cost-effective manner
Diversity and Inclusiveness to empower all sectors of the community
Integrity and Adherence to the highest ethical standards in all endeavors
Caring and Concern for the well being of individuals in need

Achieving impact through funding priorities, making funded agencies more effective and building on community assets
Committed to change, if necessary, to ensure continued relevance of the Organization in the community

Our Focus: **Education** - every child develops and succeeds academically, socially, and emotionally
Health & Wellness - Every person has the knowledge, resources, and opportunities to live a healthy lifestyle
Community Responsiveness - ensure that people's basic needs are met with dignity
Financial Stability - ensuring that all citizens achieve and maintain financial stability

VISION: *A positive community where everyone has the knowledge, resources, and opportunities to live a healthy lifestyle.*

VISION: *An engaged community where every child develops and succeeds academically, socially, and emotionally.*

VISION: *A community of collaborative partnerships working together to ensure that all citizens achieve and maintain financial stability.*

Vision: *A connected community that works together to ensure everyone's basic needs are met with dignity.*

HEALTH & WELLNESS

Everyone has the knowledge, resources, and opportunities to live a healthy lifestyle

EDUCATION

Every child develops and succeeds academically, socially, and emotionally

FINANCIAL STABILITY

Ensuring that all citizens achieve and maintain financial stability

BASIC NEEDS

Ensure everyone's basic needs are met with dignity

2023 School Campaign Coordinator Handbook

Table of Contents

GETTING TO KNOW UNITED WAY OF WAYNE COUNTY	i
YOUR CAMPAIGN PLANNING CHECKLIST	1
EMPLOYEE CAMPAIGN MATERIALS CHECKLIST	2
BROCHURE	3-4
PLEDGE FORM	5
FAIR SHARE ENTRY FORM	6
EDUCATION GRANT ENTRY FORM	7
FINAL CAMPAIGN MATERIALS CHECKLIST	8
EXAMPLE REPORT FORM	9
EXAMPLE PLEDGE FORM	10
EXAMPLE FAIR SHARE & EDUCATION GRANT ENTRY FORMS	11
EXAMPLE CAMPAIGN CHECKLIST	12
CAMPAIGN RESOURCES	13
EXAMPLES OF EMAILS TO SEND TO EMPLOYEES	14-15
FAIR SHARE POSTER	16
FAIR SHARE RULES & REGULATIONS	17
FAIR SHARE CALCULATOR	18
EDUCATION GRANT POSTER	19
2023 COMMUNITY PARTNERS	20
2023 PROGRAMS, SERVICES, & INITIATIVES	21-22
NC211	23
FAQ'S	24-25
COMMUNITY CAMPAIGN VOLUNTEER ROLES	26
COMMONLY USED UNITED WAY OF WAYNE COUNTY TERMS	27
2023 BOARD OF DIRECTORS & UWWC STAFF	28

Your Campaign Planning Check List

Whether this is your first time managing a United Way Campaign, or you are a seasoned volunteer, this checklist will help you plan a successful workplace campaign.

All materials are available on our website unitedwayne.org

BEFORE THE CAMPAIGN

- Set campaign dates!** (ex. 7/20 – 8/26)
- Set a goal for the Campaign** - You can do this on your own or UWWC Staff member can help with past history investment reports (ex. *You may want to set a goal 90% fair share giving or \$11,200 in over all employee giving with a 100% corporate match*)
- Set dates/times** to bring in United Way representation to present to your workplace about how we are addressing the largest community needs. This presentation can include a community partner.
- Your United Way representative will drop off campaign materials at your convenience once OR you can pick up at our office.

DURING THE CAMPAIGN

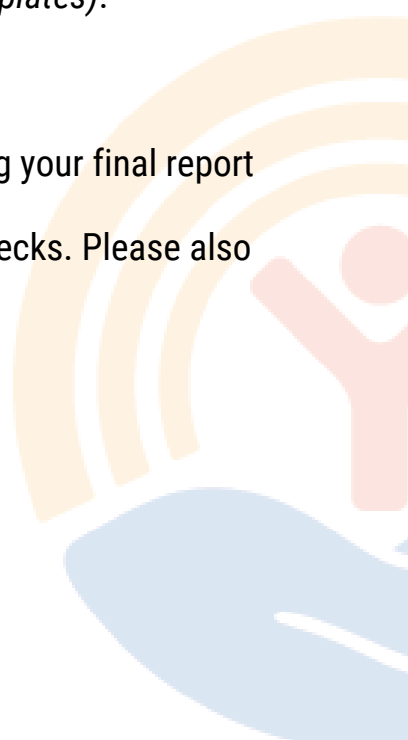
- Start your campaign off right, and send out a Campaign Kick-Off email.
- Keep your employees engaged with special events (*see our website for ideas*)
- Ask your United Way Representative to attend your event, we would love to join you and answer questions about how your campaign impacts our community.
- Remind your employees about the campaign (*Check out the Campaign HQ tab on our website for online Campaign Tool Kit containing helpful communication templates*).

AFTER THE CAMPAIGN

- Send a thank you email to your employees & volunteers.
- Reference **page 8** to ensure you have all required items before submitting your final report into the UWWC office.
- Drop off your completed report form, your pledge forms, cash, and/or checks. Please also return any unused materials.

THANK YOU...

...for your time and dedication to Wayne
County. **YOU** are the story of change.



Employee Campaign Materials Checklist

To ensure your workplace is successful, use this checklist as a guide. Compare your employee campaign packets with this list to make sure each employee is getting the correct materials.

Each item can be referenced on the following pages.

- 2023 United Way of Wayne County Brochure
- United Way Pledge Form
- Fair Share Form
- Education Grant Form



"When you think there is no where to turn, United Way of Wayne County has already partitioned on the behalf of the families and individuals who feel that they have no hope. We must continue to support United Way Wayne County and all of their initiatives, as they strengthen our belief in humanity, one person at a time."

-Eddie Edwards
State of NC Office
of the Governor
UWWC Board Member



Get Connected. Get Help.™

HELP STARTS HERE

NC 211 is a free, confidential, and multilingual health and human services information and referral system, available 24 hours a day in all North Carolina counties. Managed by United Wayne of North Carolina and supported by many local United Ways across the state, NC 211 has continuously gained recognition as a trusted resource in the state and serves as a key member of the State Emergency Response Team.

North Carolinians can find help by dialing 2-1-1 (or 1-888-892-1162) or by visiting nc211.org

"I am proud and honored to be a part of an organization that is committed to a sustainable future for our community, practices the most ethical decision making, and understands that a diverse board ensures a higher level of human connection."

-Andrea Freile
Wayne County Public Schools
UWWC Board Member



IT STARTS WITH



UNITED WAY OF WAYNE COUNTY



SCAN ME WITH YOUR PHONE

United Way of Wayne County



UNITED, WE'RE THE STORY OF CHANGE

2803 Cashwell Drive
Goldsporo, NC 27532
919-735-3591 (P)
919-735-3654 (F)
unitedwayne.org



EDUCATION



FINANCIAL STABILITY



BASIC NEEDS



HEALTHY & WELLNESS

WHAT do we do?

United Way of Wayne County (UWWC) identifies pressing issues in our community, and funds nonprofit programs across Wayne County to improve lives and create long term impact.

HOW do we raise funds?

Through our community campaign, investors and grants. The UWWC annual campaign raises hundreds of thousands of dollars that we in turn put right back into the local community. 100% of funds raised during our community campaign stays here in Wayne County.

WHO are we here for?

Simply put, everyone. Poverty is not a prerequisite. Anyone can have an emergency, or simply need a little help with life in general. UWWC and our funded partners are poised and ready to step in to help.

WHERE does it go?

We have a very vigorous vetting process funded programs go through to ensure the funds we raise make the biggest, most sustainable impact. See next page for a full list of funded programs.

FOCUS AREAS



BASIC NEEDS



FINANCIAL STABILITY



EDUCATION



HEALTH & WELLNESS

UNITED WAY OF WAYNE COUNTY FUNDED PROGRAMS



Rones Chapel Area Community Center
919-658-0476
-Tutor to the Top



Partnership for Children
919-735-3371
800 N William Street
-Triple P Parenting



WAGES
919-734-1178
601 E. Royall Avenue
-Nutrition Program for the Elderly



Girl Scouts NC Coastal Pines
919-734-6231
108 E Lockhaven Drive
-Girl Scouts Community Troop



Boy Scouts Tuscarora Council
919-734-1714
172 Hwy 581 S
-Boy Scouts Community Troop



Society of St. Vincent de Paul
919-734-5033
1000 N Jefferson Ave
-Emergency Assistance



American Red Cross
919-735-7201
600 N. George Street
-Single Family Fire
-Armed Forces Emergency Services



Literacy Connections of Wayne County
919-735-1990
2001D E Ash Street
-Adult and Family Literacy
-Bank on Wayne



Wayne Uplift Resource Association
919-736-1313
719 E. Ash Street
-Domestic Violence Victim Support



Wayne Pregnancy Care Center
919-583-9330
3501 E Ash Street
-Pregnancy, Birth & Beyond
-Cry Freedom Missions



The Salvation Army
919-735-4811
610 N William Street
-Shelter for Men
-Emergency Assistance



Habitat for Humanity
919-736-9592
131 E Walnut Street
-A Brush with Kindness



Communities Supporting Schools
919-735-1432
308 N William Street
-Teen Court



Boys & Girls Clubs of Wayne County
919-7735-2358
1401 Royal Ave
-Aim for Success
-SMART Moves
-Triple Play

GET INVOLVED

Share your skills, knowledge and time.
VOLUNTEER WAYNE
The Volunteer Resource For Wayne County



1 My Contact Information (please print)

FIRST NAME: _____ MIDDLE: _____ LAST: _____ SUFFIX: _____

HOME ADDRESS: _____ EMPLOYER: _____

CITY/STATE/ZIP: _____ WORK PHONE: _____

HOME/CELL PHONE: _____ EMAIL: _____

2 My United Way Investment (please complete sections A, B, C, and D)

A GIVING LEVEL (choose one)

- FAIR SHARE INVESTMENT**
Eligible for Fair Share Challenge
Hourly employees: pledge 1 hours pay or more per month
Salary employees: pledge 0.6% of annual salary
- LEADERSHIP INVESTMENT**
Minimum investment of \$500
- OTHER INVESTMENT**
NOT eligible for Fair Share Challenge
If you selected this option, please include the amount per pay period you would like to pledge in the space below. If investing a one time payment please write N/A.

\$ _____ per pay period (only fill this out if selected "other investment")

C INVESTMENT OPTIONS (choose one)

- PAYROLL DEDUCTION**
Automatically deduct payments from each paycheck over 12 months beginning in 2024 (This can be weekly, bi-weekly, monthly, etc. depending on your employer's pay schedule.)
- PAY NOW BY ATTACHING CASH OR CHECK**
Please make all checks payable to United Way of Wayne County
- PAY WITH CARD**
By visiting unitedwayne.org/payyourcampaign or scan the QR code with your phone camera for a direct link.
- PAY LATER BY DIRECT BILL (\$60 minimum)**
Your home address is required.
If direct bill, choose a billing preference: Quarterly On-time billing on _____ date
- STOCK PAYMENT DATE**



B TOTAL ANNUAL INVESTMENT

In this section please include the total dollar amount that you will be investing over a 12 month period.

\$ _____

If you need help calculating your total annual investment, please see your campaign coordinator

D DIRECT MY INVESTMENT TO: (choose one)

*Directing your payment requires a **minimum investment of \$60.***

- Community Campaign** (impact ALL programs and initiatives)
- Education Health & Wellness Basic Needs Financial Stability
- United Way of Wayne County funded program: _____
fill in program name
- Direct my investment to another United Way: _____
fill in United Way name
If investing in another United Way community, please include the state that community resides in: _____
State

**For a full list of United Way of Wayne County's Funded Programs, please visit unitedwayne.org/community-partners or scan the QR code below with your phone camera*

3 Confirm my investment (Signature and date are required for all payment methods and for this pledge to be considered valid)

My Signature: _____ Date: _____



FAIR Share Challenge Rules and Regulations

1. The Grand Prize. One person will win a \$10,000 cash prize.
****This is a sponsored incentive, no investor dollars are used in the Fair Share Challenge.*
2. Who is eligible? Any person who is 18 years or older, with a Social Security number or ITIN number, and makes a Fair Share contribution of 1 hour's pay per month for twelve months, or .6% of annual salary or more to United Way of Wayne County's 2023 Community Investment Campaign. Completed entry form must be given to the employer's Campaign Coordinator, who will forward it to United Way of Wayne County after validating the pledge information. All entry forms must be accompanied with a completed pledge form, and delivered to the office of United Way of Wayne County (2803 Cashwell Drive, Suite B Goldsboro, NC 27534). One entry per person. United Way reserves the right to determine the validity and eligibility of all entries. Deadline for all entries is November 17, 2023.
3. Who is not eligible? United Way of Wayne County staff, board members, and employees of the independent accounting firm who verifies and supervises the entries and drawing and their immediate families.
4. How the drawing works: Beginning with an initial drawing on August 23, 2023, bi-weekly drawings will take place on Fridays (Sept 8 through Nov 17) at 8:00am on WGBR. A finalist entry form will be drawn from among the total eligible entries. A total of 21 finalists will be randomly selected to move on into the Grand Prize event at our Fair Share Challenge Finale on December 5, 2023. Each of the finalists will be notified and invited to the Campaign Recognition Event on December 5th where a single winner will be determined. Finalists must provide United Way of Wayne County with proof of a Social Security number or ITIN number prior to the final drawing and **must be present** at the final event.
5. Independent accounting firm, Nunn, Brashear & Uzzell, PA. will verify all finalist entries and Social Security number or ITIN number at the final drawing event.
6. Requirements: The winner must provide United Way of Wayne County with their Social Security number or ITIN number in order to win the grand prize. United Way of Wayne County will mail the winner an IRS Form 1099. The winner is required to pay all applicable taxes, and must pay his/her pledge in full to United Way of Wayne County by December 31, 2024. The winner grants United Way of Wayne County the use of his/her name and photograph in all communication and publicity materials.

To Enter:

1. Complete this entry form. Any person who is 18 years or older, has a valid Social Security number or ITIN number, and makes a Fair Share contribution of 1 hour's pay per month for twelve months or .6% of annual salary, or more to United Way of Wayne County's 2023 Community Investment Campaign is eligible. Pledge cannot be designated to another United Way or to a program not supported by the United Way of Wayne County.
2. Completed entry form must be given to the employer's Campaign Coordinator and must be accompanied by a signed pledge form (United Way copy), included in the campaign report envelope, and delivered to the office of United Way of Wayne County (2803 Cashwell Drive, Suite B, Goldsboro, NC 27534). **One entry per person.** United Way of Wayne County reserves the right to determine the validity and eligibility of all entries.



**This is a sponsored incentive, no investor dollars are used in the FAIR SHARE CHALLENGE.*

FAIR SHARE CHALLENGE

Good Things come to those who Care!

Thank you for your FAIR SHARE Investment!

Your Fair Share Investment in United Way of Wayne County is important to our community and is greatly appreciated. It shows that you **BELIEVE** together we can improve lives here in our community. You **INVESTED** today to impact people's futures and **CHANGE** lives for generations.

Investing in United Way of Wayne County is **MORE REWARDING** than ever!

To show our appreciation, United Way of Wayne County is offering you this chance to win a \$10,000 cash prize.

It's Easy...

To qualify for the Fair Share Challenge, you complete the investment form with a minimum annual investment or pledge of 1 hour's pay per month or .6% of annual salary (FAIR SHARE) or more to United Way of Wayne County. Return both forms; the entry form below and your completed United Way of Wayne County Investment Form to your United Way Campaign Coordinator.

See reverse side for complete FAIR SHARE CHALLENGE Rules



United Way of Wayne County

For more information visit unitedwayne.org

FAIR SHARE CHALLENGE Entry Form

NAME: _____

ADDRESS: _____

CITY, STATE, ZIP: _____

EMPLOYER: _____

Daytime PHONE: _____

Cell or Evening PHONE: _____

E-MAIL: _____

BY SIGNING THIS FORM YOU AGREE TO THE RULES LISTED ON THE BACK OF THIS FORM.

SIGNATURE (REQUIRED)

DATE

EDUCATION GRANT CHALLENGE

Rules and Regulations

Who is eligible? Any primary and secondary school employee who is 18 years or older, and makes a FAIR SHARE contribution of 1 hour's pay per month for twelve months, or .6% of annual salary or more to United Way of Wayne County's 2023 Community Campaign. Completed entry form must be given to the school's Campaign Coordinator, who will forward it to United Way of Wayne County after validating the pledge information. Pledge cannot be designated to another United Way or to a program not supported by the United Way of Wayne County.

All entry forms must be accompanied with a completed pledge form, along with a pledge report and delivered to the office of United Way of Wayne County (2803 Cashwell Drive, Suite B Goldsboro, NC 27534). One entry per person. United Way reserves the right to determine the validity and eligibility of all entries. Deadline for all entries is November 17, 2023 at 8:00am.

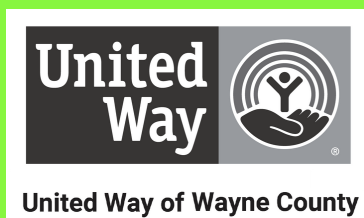
How the drawing works: FIVE, \$500 EDUCATION CLASSROOM GRANTS and ONE \$5,000 EDUCATION SCHOOL GRANT will be awarded by a random drawing of eligible entries. SCHOOLS MUST REACH A TOTAL SCHOOL INVESTMENT EQUAL TO OR GREATER THAN \$30 PER EMPLOYEE(\$30 per capita). Grants are to be used for academic enhancements at the discretion of the school Principal and will be payable to the school, and presented to the school Principal to be distributed to the recipient(s).

Requirements: The winner grants United Way of Wayne County the use of his/her name and photograph in all communication and publicity materials.

For more information, please submit requests in writing to United Way of Wayne County, PO Box 10893, Goldsboro, NC 27532 or e-mail to info@unitedwayne.org.

Grant recipients will be determined from "Final" campaign reports submitted to UWWC. Grants will be payable to the school and presented to the school Principal.

CONNECTED, we make a difference.



**This is a sponsored incentive, no investor dollars are used in the EDUCATION GRANT CHALLENGE.*

EDUCATION GRANT CHALLENGE

BELIEVE - INVEST - CHANGE

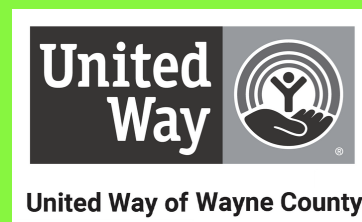
Thank you for your FAIR SHARE Investment!

Your FAIR SHARE Investment in United Way of Wayne County is important to our community and is greatly appreciated. United Way of Wayne County is offering \$2500 in Education Grants and ONE \$5,000 School Grant in support of Wayne County Public Schools and its classroom teachers. Your investment makes you eligible for a \$500 EDUCATION CLASSROOM GRANT to be used in your classroom or classroom of your choice.

It's Easy...

To qualify for the EDUCATION GRANT CHALLENGE, simply complete the entry form below and your United Way of Wayne County pledge form with a minimum annual donation or pledge of 1 hour's pay per month, or .6% of annual salary (FAIR SHARE) or MORE to United Way of Wayne County. Return both completed forms to your United Way Campaign Coordinator.

See reverse side for complete CHALLENGE Rules



EDUCATION GRANT CHALLENGE ENTRY FORM

NAME: _____

ADDRESS: _____

CITY, STATE, ZIP: _____

SCHOOL/DEPARTMENT: _____

HOME PHONE: _____

WORK PHONE: _____

E-MAIL: _____

BY SIGNING THIS FORM YOU AGREE TO THE RULES LISTED ON THE BACK OF THIS FORM.

SIGNATURE (REQUIRED)

DATE

Final Campaign Materials Checklist

To ensure your workplace is successful, use this checklist as a guide. Compare your report form, pledge forms, monies, etc. to this list.

Each item can be referenced on the following pages. Make sure your Report form and pledge forms match the examples we have provided.

- Completed Report Form
- YELLOW** copies of your staff's Pledge Forms
- Completed (**WHITE**) Fair Share Forms for **ALL** employees who give their Fair Share (please do not staple these to the pledge or report forms).
- Completed (**LIME**) Education Grant Forms for **ALL** employees who give their Fair Share (please do not staple these to the pledge or report forms).
- Any unused materials



2023 Campaign Report



United Way of Wayne County

This Report Is: PARTIAL
 A partial report means your campaign is still in progress.
 Please report only amounts contained in this envelope.
 A checklist is provided on the back for your assistance.

This Report Is: FINAL
 A final report means your campaign is complete.
 Please report only amounts contained in this envelope.
 A checklist is provided on the back for your assistance.

2022 Employee Investment: \$2,600.00

Really Great School

Contact Information (please print clearly)

Address 211 Improving Lives Way Goldsboro, NC 27530
 Envelope prepared by: Jane Doe, Campaign Coordinator for Really Great School
 E-mail Address janedoe@reallygreatschool.com
 Preparer's phone number (919) 555-5555 Date 10/18/2023

Thank you for investing in our community through United Way of Wayne County.

For more information on how we are working together to improve lives, please visit unitedwayne.org

Please Contact UWWC volunteer or staff for report pickup (919)735-3591

1. COMPANY INFO

Total # employed by your company 55 Total # investors 19
 Total # Leadership Givers 2
 (Annual investment of \$500 or more)

2. CORPORATE GIVING

3. EMPLOYEE GIVING

- a. Cash
- b. Checks
- c. Credit Cards
- d. Direct Bills
- e. Payroll Deductions
- f. Stocks

4. SPECIAL EVENTS

5. TOTALS

6. Fair Share Entries # 17 Total Fair Share amount \$ 5,820.20

	Column 1 Total Gift/Pledge \$	Column 2 Payment Enclosed
	\$ _____	\$ _____
	Total Gift/Pledge \$ (include all pledges & all payments)	Payment Enclosed \$ (include payments only)
	\$ <u>175</u>	\$ <u>175</u>
	\$ <u>500</u>	\$ <u>500</u>
	\$ _____	
	\$ _____	
	\$ <u>5,398.20</u>	
	\$ _____	
	\$ <u>1,488</u>	\$ <u>1,488</u>
	\$ <u>7,561.20</u>	\$ <u>2,163</u>
	Column 1 TOTAL (also equals grand total for your campaign)	Column 2 TOTAL

NOTES

THANK YOU!



1 My Contact Information (please print)

FIRST NAME: John MIDDLE: _____ LAST: Smith SUFFIX: _____
HOME ADDRESS: 123 United Way Dr EMPLOYER: Really Great School
CITY/STATE/ZIP: Goldsboro, NC, 27530 WORK PHONE: 919-555-5555
HOME/CELL PHONE: 555-555-5555 EMAIL: you@reallygreatschool.com

2 My United Way Investment (please complete sections A, B, C, and D)

A GIVING LEVEL (choose one)

- FAIR SHARE INVESTMENT**
Eligible for Fair Share Challenge
Hourly employees: pledge 1 hours pay or more per month
Salary employees: pledge 0.6% of annual salary
- LEADERSHIP INVESTMENT**
Minimum investment of \$500
- OTHER INVESTMENT**
NOT eligible for Fair Share Challenge
If you selected this option, please include the amount per pay period you would like to pledge in the space below. If investing a one time payment please write N/A.

\$ _____ per pay period (only fill this out if selected "other investment")

C INVESTMENT OPTIONS (choose one)

- PAYROLL DEDUCTION**
Automatically deduct payments from each paycheck over 12 months beginning in 2024 (This can be weekly, bi-weekly, monthly, etc. depending on your employer's pay schedule.)
- PAY NOW BY ATTACHING CASH OR CHECK**
Please make all checks payable to United Way of Wayne County
- PAY WITH CARD**
By visiting unitedwayne.org/payyourcampaign or scan the QR code with your phone camera for a direct link.
- PAY LATER BY DIRECT BILL (\$60 minimum)**
Your home address is required.
If **direct bill**, choose a billing preference: Quarterly On-time billing on _____ date
- STOCK PAYMENT DATE**



B TOTAL ANNUAL INVESTMENT

In this section please include the total dollar amount that you will be investing over a 12 month period.

\$ 250

If you need help calculating your total annual investment, please see your campaign coordinator

D DIRECT MY INVESTMENT TO: (choose one)

Directing your payment requires a **minimum investment of \$60.**

- Community Campaign** (impact ALL programs and initiatives)
 - Education Health & Wellness Basic Needs Financial Stability
- United Way of Wayne County funded program: _____
fill in program name
- Direct my investment to another United Way: _____
fill in United Way name
If investing in another United Way community, please include the state that community resides in: _____
State

*For a full list of United Way of Wayne County's Funded Programs, please visit unitedwayne.org/community-partners or scan the QR code below with your phone camera

3 Confirm my investment (Signature and date are required for all payment methods and for this pledge to be considered valid)

My Signature: John Smith Date: 10/18/2023



FAIR SHARE CHALLENGE Entry Form

NAME: John Smith

ADDRESS: 123 United Way Dr

CITY, STATE, ZIP: Goldsboro, NC, 27530

EMPLOYER: Really Great School

Daytime PHONE: 919-555-5555

Cell or Evening PHONE: 555-555-5555

E-MAIL: you@reallygreatschool.com

BY SIGNING THIS FORM YOU AGREE TO THE RULES LISTED
ON THE BACK OF THIS FORM.

John Smith 10/18/23
SIGNATURE (REQUIRED) DATE

EDUCATION GRANT CHALLENGE ENTRY FORM

NAME: John Smith

ADDRESS: 123 United Way Dr

CITY, STATE, ZIP: Goldsboro, NC, 27530

SCHOOL/DEPARTMENT: Really Great School

HOME PHONE: 555-555-5555

WORK PHONE: 919-555-5555

E-MAIL: you@reallygreatschool.com

BY SIGNING THIS FORM YOU AGREE TO THE RULES LISTED
ON THE BACK OF THIS FORM.

John Smith 10/18/23
SIGNATURE (REQUIRED) DATE

**NOTE: Please do not staple Fair Share or Education
Grant Entry Forms to Pledge forms or Report Forms**



United Way of Wayne County

CAMPAIGN CHECKLIST

- ✓ Did you fill out the entire report?
- ✓ Did you enclose a signed copy of each pledge form?
- ✓ Did you enclose completed and **SIGNED** Fair Share entries with appropriate pledge forms?
- ✓ Did you send the white portion of the pledge forms for payroll deduction pledges to your payroll department? ***Educators/WCPS employees send Reports/Pledges to Central Office HR department ***
- ✓ Does all information on this report balance with enclosed pledge cards?
- ✓ Did you report special event income on appropriate line?
- ✓ Did you make a copy of your campaign report for your records?

Questions/concerns please leave a comment on reverse side in "Notes" box

Thank You!

If you need immediate assistance, please call (919)735-3591

Campaign Resources

Campaign resources that can help make your campaign successful including email templates, FAQ's, posters, and more can be found here and on our website at unitedwayne.org.

CAMPAIGN TOOLKIT

Thank you for leading a Workplace Campaign powered by United Way of Wayne County. We know it takes dedication and commitment on top of your existing roles to ensure each one of your employees has an opportunity to give back to our community.

This Tool Kit was designed with YOU in mind. All of the resources were built to assist you in engaging your workplace in the annual United Way campaign - just toggle the tabs below to access the resources!

- **Email Templates** - Use email script templates to let your team know about this opportunity to give back.
- **Events & Incentive Ideas** - Access in person special event plans and incentive ideas.
- **FAQs** - Find answers for commonly asked questions about United Way and the work this campaign supports.
- **Printable Tools** - Use our messaging, promotional materials, and videos to spread the word.

Have any questions along the way or want to share a great idea? Feel free to reach out to our team anytime.

Bethany Perry
Campaign Chair
919-735-3591
bethany@unitedwayne.org

Sherry Archibald
Executive Director
919-735-3591
sarchibald@unitedwayne.org



EMAIL TEMPLATES
Use these email templates to let your team know about this opportunity to give back. Includes templates for email newsletters, social media posts, and more.

EVENTS & INCENTIVES
These suggestions are sure to engage your staff at work. Includes ideas for group events, incentives, and more.

PRINTABLE TOOLS
Stock the shelves of United Way during your campaign. Includes posters, flyers, and more.

FREQUENTLY ASKED QUESTIONS
It's only natural for people to have questions, especially when they're giving their money. Here are some frequently asked questions (FAQs) you may have.

Examples of Emails to Send to Employees

The email templates below will keep your employees informed about your campaign. Visit our website where you can simply copy and paste the email and customize however you'd like.

You can find all templates on our website unitedwayne.org

Pre-Campaign Email:

(Send this email at the start of the campaign to generate employee support)

We at (Company Name) know that there are families struggling everyday to get ahead, at-risk students that need our help, and home bound senior citizens that need hot meals. This is why we're a proud (partner/supporter and collaborative partner) of United Way of Wayne County.

United Way leads community wide innovation to address the issues that most people say can't be solved so that people can be helped today and create a community where everyone has the opportunity to thrive.

Not only are we a supporter of UWWC, but we are a proud collaborative partner as well through (Community Partner Name). **NOTE This is if your company works together with a UWWC Funded Partner/Program**

Giving is easy and can be done online at unitedwayne.org or you can pick up a paper pledge form from (Campaign Coordinator) to make your gift.

Our team at (company name) can be game changers in Wayne County. Join me in supporting this year's United Way Campaign, from (Start Date-End Date), because connected, we can accomplish more than any of us can alone.

(Closing salutation)
(Your name)

Pledge Campaign Reminder Email:

(Send this email midway through the campaign)

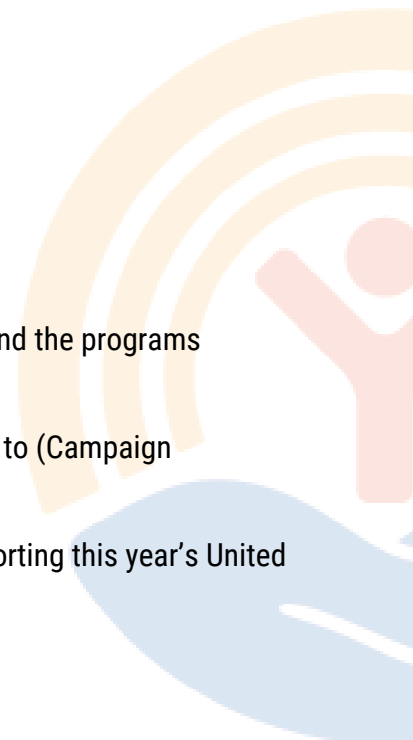
As you know, the United Way campaign is underway and ends on (End Date).

Every dollar raised through our campaign stays right here in Wayne County, and helps fund the programs available for the residents, your neighbors of Wayne County.

Giving is easy and can be done by filling out your pledge form I provided and returning it to (Campaign Coordinators Name and Location) or give online at unitedwayne.org.

Our team at (Company Name) can be game changers in Wayne County. Join me in supporting this year's United Way Campaign because connected, we can accomplish more than any of us can alone.

(Closing salutation)
(Your name)



Thank You Email

(Send this email at the end of your campaign)

On behalf of (company name) I would like to thank each of you for your contribution to this year's United Way campaign.

We were able to raise \$(amount your campaign raised) to help positively impact Wayne County so that everyone has the opportunity to thrive.

It is individuals like you who are making this change in our community possible. Big problems require bold goals and decisive action. Connected, we are achieving positive and measurable results.

On behalf of United Way of Wayne County, I thank you once again for your support this campaign season. I encourage you to please visit their website at unitedwayne.org, follow them on Facebook, & Instagram, call their office at 919-735-3591, to learn how to stay involved and see your investment at work.

Thank you for being a game changer,
(Your name)



United Way of Wayne County Presents

FAIR SHARE *Challenge*

YOU COULD WIN \$10,000!

To qualify you must become a United Way of Wayne County Fair Share Investor (One hours pay per month or 0.6% of your annual salary for 1 year)

Save the Dates:

THREE names will be randomly selected from each drawing biweekly LIVE on WGBR

August 23, 2023 - Front Runners ONLY

September 8, 2023

September 22, 2023

October 6, 2023

October 20, 2023

November 3, 2023

November 17, 2023 - FINAL DRAWING

**December 5, 2023 - Fair Share Challenge
Finale Event**



See your United Way Campaign Coordinator OR visit unitedwayne.org for more information

United Way of
Wayne County



FAIR SHARE Challenge

YOU COULD WIN \$10,000!

Here's how:

TO QUALIFY: a workplace employee simply pledges a Fair Share gift to the 2023 Community Campaign and completes an official entry form. The Fair Share Challenge is not available for residential or state employee combined campaigns. Pledges cannot be designated to another United Way nor to any non-profit that is not a current United Way of Wayne County Community Funded Partner.

TO ENTER: Make a Fair Share contribution of 1 hour's pay per month or .6% of annual salary or more for 12 months to United Way of Wayne County's 2023 Community Campaign. Must be **18 years or older**. Complete the required entry form. United Way reserves the right to determine the validity and eligibility of **all** entries. *Only one entry per person allowed.*

ENTRY FORMS: All forms must be accompanied by the corresponding pledge form which reflects the amount of the Fair Share pledge (verified by employer) along with a signed Campaign Pledge Report from the employer reflecting the fair share pledges. All forms must be original. Copies will **not** be accepted. *Deadline for all entries is November 17, 2023 by 8:00 AM.*

WHO IS NOT ELIGIBLE: United Way of Wayne County staff, board members, and employees of the independent accounting firm, Nunn, Brashear, & Uzzell, PA, who verifies the finalist entries and oversees the final event.

DRAWINGS: Beginning with an initial, Front Runners-only drawing on August 23, 2023, bi-weekly drawings will take place each Friday (September 8 through November 17) at 8:00 AM live on WGBR. The final drawing will be on November 17. Each of the finalists will be notified and invited to the Finale Event on Tuesday, December 5, 2023. All finalists must be present at the Finale Event, no substitutions are permitted.

WINNER: is required to pay all applicable taxes and *must pay his/her pledge in full to United Way of Wayne County by December 31, 2024.* The winner grants United Way of Wayne County the use of his/her name and photograph in all communication and publicity materials.

Fair Share Pledge Calculations For employees of Wayne County Schools

The below equations have been created to help 10-month and 12-month Wayne County School employees calculate their annual & monthly "Fair Share" giving amounts to the United Way of Wayne County. Please note that Wayne County Schools does not take out payroll deductions over the summer for 10 month employees paid over 12-months. This means, all 10 month employees need to plan for deductions taken out over 10 months.

SALARIED EMPLOYEES **0.6% "Fair Share" Pledge**

For **10-month** salary employees paid over 10-month period:

.006 X Gross Annual Salary = Annual Fair Share Pledge Amount
Annual Fair Share Pledge Amount ÷ 10 = Monthly Payroll Deduction (No deductions are taken over summer)

(Ex. if you make \$30,000 a year and have .6% ("Fair Share") of your annual salary taken out each month your Annual Gift Amount is \$180.00, which equates to \$18.00 a month over 10 months)

For **12-month** salary employees paid over 12-month period:

.006 X Gross Annual Salary = Annual Fair Share Pledge Amount
Annual Fair Share Pledge Amount ÷ 12 = Monthly Payroll Deduction

(Ex. if you make \$30,000 a year and have .6% ("Fair Share") of your annual salary taken out each month your Annual Gift Amount is \$180.00, which equates to \$15.00 a month over 12 months)

HOURLY PAID EMPLOYEES **One Hours Pay Per Month "Fair Share" Pledge**

For **10-month** salary employees paid over 10-month period:

Calculate your hourly rate: Gross Annual Salary ÷ 1720 hrs. = Hourly pay rate & Monthly Deduction
(1720 represents 8 Hours X 21.5 days X 10 months)

Hourly Rate & Monthly Deduction X 10 = Annual Fair Share Pledge Amount (Deductions are not taken out over summer, so Fair Share giving must be done over 10 months)

(Ex. if you make \$30,000 a year and have 1 hour ("Fair Share") of your annual salary taken out each month, your hourly rate deduction per month is \$17.44, which equates to a \$174.42 annual deduction over 10 months.)

For **12-month** salary employees paid over 12-month period:

Calculate your hourly rate: Gross Annual Salary ÷ 2064 = Hourly Rate & Monthly Deduction
(2064 represents 8 Hours X 21.5 days X 12 months)

Hourly Rate & Monthly Deduction X 12 = Annual Fair Share Pledge Amount

(Ex. if you make \$30,000 a year and have 1 hour ("Fair Share") of your annual salary taken out each month, your hourly rate deduction per month is \$14.54, which equates to a \$174.42 annual deduction over 12 months)

United Way of
Wayne County



UNITED WAY OF WAYNE COUNTY
**TOGETHER,
WE STRENGTHEN
OUR
SCHOOLS**

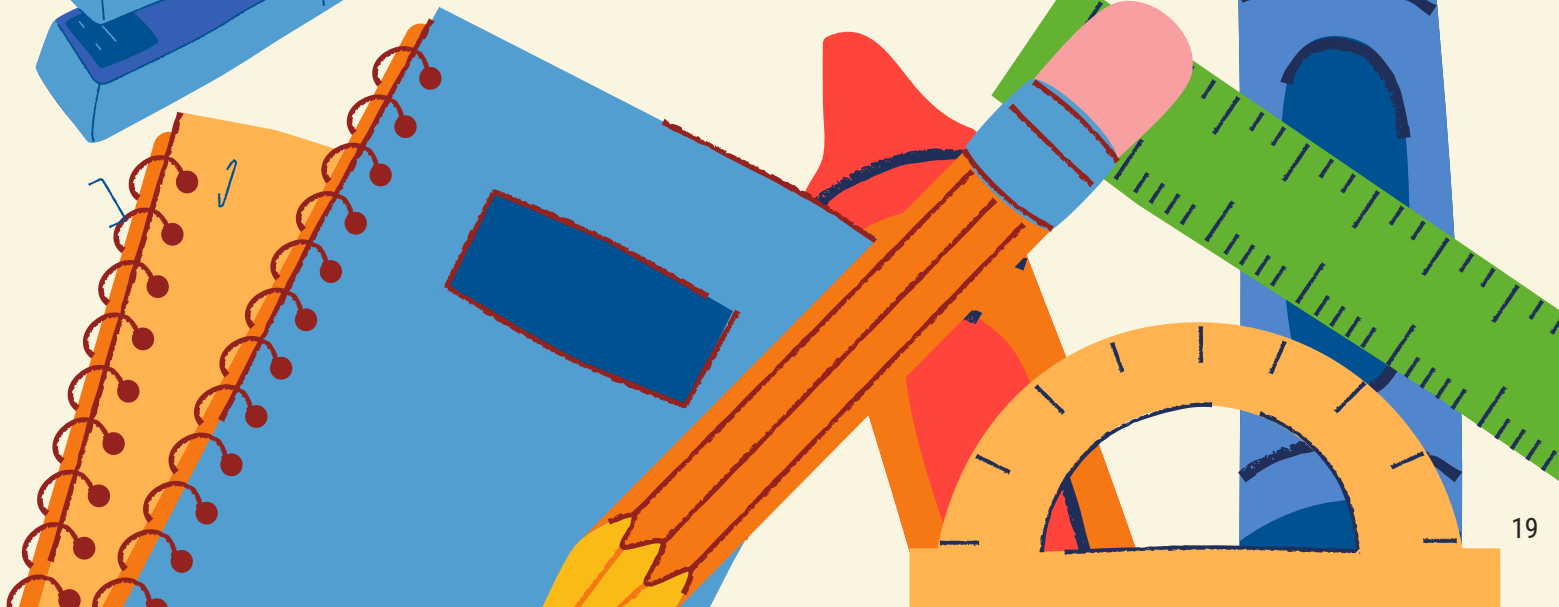
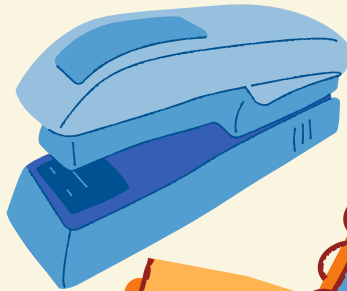
**\$5,000 FOR
YOUR SCHOOL**

OR

**\$500 FOR YOUR
CLASSROOM**

**UNITED WAY OF WAYNE COUNTY WILL GIVE FIVE QUALIFYING
EDUCATORS A \$500 GRANT TO SPEND IN THEIR CLASSROOM
AND A \$5,000 GRANT TO ONE QUALIFYING SCHOOL.**

VISIT UNITEDWAYNE.ORG FOR DETAILS



2023 COMMUNITY PARTNERS

<p>James Jarvis, Chief Executive Officer American Red Cross - Eastern NC Chapters Phone: 910-843-5888 james.jarvis3@redcross.org Local Office is located at: 600 N. George Street</p>  <p>Invested Programs: Single Family Fires Armed Forces Emergency Services</p>	<p>Suzie Acree, Director Literacy Connections of Wayne County 2001-D East Ash Street Goldsboro, NC 27530 Phone: 919-735-1990 suzie.acree@waynegov.com</p>  <p>Invested Programs: Adult and Family Literacy Bank On Wayne</p>	<p>Linda Holden-Cox, Director Wayne Uplift Resource Assoc. 1112 E. Ash Street Goldsboro, NC 27530 Phone: 919-736-1313 holdencox@bellsouth.net</p>  <p>Invested Program: Domestic Violence Victim Support</p>
<p>Kirk Mayes, Scout Executive/CEO Boy Scouts – Tuscarora Council 172 NC Hwy 581 S. P.O. Box 1436 Goldsboro, NC 27530 Phone: 919-734-1714 (c) 919-291-9845 kirk.mayes@scouting.org</p>  <p>Invested Programs: Scouting - Community Troops</p>	<p>Valerie Wallace, Director Partnership for Children – Wayne County 800 N. William Street Goldsboro, NC 27530 Phone: 919-735-3371 x231 vwallace@pfcw.org</p>  <p>Invested Programs: Triple P Parenting Program</p>	<p>Beverly Weeks, Director Wayne Pregnancy Center 3501 E Ash St Goldsboro, NC 27534 Phone: 919-583-9330 beverly@cryfreedommissions.com</p>  <p>Invested Programs: Cry Freedom Missions Pregnancy, Birth, & Beyond</p>
<p>Karen Sullivan, Director Boys & Girls Clubs of Wayne County 1401 Royall Ave. P.O. Box 774 Goldsboro, NC 27533 Phone: 919-735-2256 karen.sullivan@bgcwayne.org</p>  <p>Invested Programs: Aim For Success SMART Moves Triple Play</p>	<p>Capt. Jonathon & Dawn Whitaker, Directors The Salvation Army 610 N. William Street P.O. Box 264 Goldsboro, NC 27533 Phone: 919-735-4811 jonathan.whitaker@uss.salvationarmy.org dawn.whitaker@uss.salvationarmy.org</p>  <p>Invested Programs: Emergency Assistance Shelter for Men</p>	<p>Matt Whittle, Director Habitat For Humanity 2719 Graves Drive Suite 3 Goldsboro, NC 27530 Phone: 919-736-9592 mwhittle@habitatgoldsboro.org</p>  <p>Invested Programs: Brush With Kindness</p>
<p>Selena Bennett, Director Communities Supporting Schools 308 N. William Street P.O. Box 11557 Goldsboro, NC 27532 Phone: 919-735-1432 sbennett@waynecss.org</p>  <p>Invested Programs: Restorative Justice Program</p>	<p>Wayne Barnes, President Society of St. Vincent de Paul St. Mary Catholic Church 1000 N. Jefferson Street Goldsboro, NC 27530 Phone: 919-922-4216 brantley24@yahoo.com</p>  <p>Invested Program: Emergency Assistance Program</p>	<p>Connie Wells, Director Rones Chapel Area Community Center 126 W NC Hwy 403 Mount Olive, NC 28365 Phone: 919-658-0476 rcacc@earthlink.net</p>  <p>Invested Programs: Tutor to the Top</p>
<p>Terrica Hay, Membership Dir. Wayne Cty Meta Trombley, Regional Dir. Girl Scouts NC Coastal Pines 108 E. Lockhaven Dr. Goldsboro, NC 27534 Phone: 919-432-6121 mtrombley@nccoastalpines.org thay@nccoastalpines.org</p>  <p>Invested Programs: Community Troops</p>	<p>Patricia Beier, Director WAGES 601 East Royall Avenue Goldsboro, NC 27534 Phone: 919-734-1178 pbeier@wagesnc.org</p>  <p>Invested Program: Meals on Wheels</p>	<p>United Way of Wayne County</p>  <p>Sherry Archibald, Executive Director 2803-B Cashwell Drive P.O. Box 10893 Goldsboro, NC 27532 Phone: 919-735-3591 sarchibald@unitedwayne.org www.unitedwayne.org</p>
 <p style="text-align: right;">NC 211 www.nc211.org www.unitedwayne.org</p>		

United Way of Wayne County 2023

Programs, Services and Initiatives



American Red Cross

Victims of single family fires are provided emergency assistance, food, short-term shelter and referral services through the **Single Family Fires program** of The American Red Cross.

The American Red Cross, facilitates **Armed Forces Emergency Services** that communicate between service members and their families in times of medical emergencies, death and financial hardship.



Through **Emergency Assistance program** at The Salvation Army, short-term assistance is available to ensure 30 days of continued housing/utilities, outreach (food, clothing, household goods) and recovery assistance. Homeless men are provided emergency shelter, three daily meals, life skills classes, counseling and outreach services at the Shelter for Men provided by The Salvation Army.



Families in Wayne County are assisted by the Society of Saint Vincent de Paul's Emergency Assistance program with financial aid and direct payments of bills. They receive assistance towards budgeting and financial stability.



Expectant parents attend **Pregnancy Birth and Beyond (PB&B)** classes. This allows participating parents a better foundation and understanding of the pregnancy, labor, birth, and early stages of infant development. In addition to the prenatal education, PB&B also follows the newborns/families through the first six months to a year after birth with continued contact and resources as needed.



Cry Freedom Missions is fighting to eradicate sex trafficking through Reaching, Rescuing, and Restoring the lives of survivors. Once they connect with a survivor, a comprehensive process involving justice for the perpetrators and recovery and rehabilitation for the survivors begins. It is their passion to see this heinous and barbaric injustice abolished in our generation. They long to see every boy, every girl, every woman, and every man enslaved in trafficking to experience FREEDOM!

Boys and girls participate in **Aim for Success** education program which includes age-appropriate activities on personal responsibilities, managing money, how to set goals, improving self-esteem and improving grades at the Boys and Girls Club of Wayne County in three locations- Goldsboro, Fremont and Mount Olive.



Children participated in **Smart Moves** program where they learned about the consequences of adolescent sexual activity and improved their self-esteem and decision making skills in order to avoid unsafe behaviors.

Children participating in the **Triple Play**, which provides youth with structured activities such as increasing their daily exercise and improve their knowledge of nutrition and eating habits.



The **Triple P** – Positive Parenting Program is backed by hundreds of trials and studies, and gives you proven parenting strategies to make life easier and calmer at home, and help your kids grow up to be happy, confident and successful. Thousands of American families are seeing the benefits of doing Triple P Online, or Teen Triple P Online.



Habitat for Humanity's **Brush with Kindness**, a home repair program where they help facilitate minor interior and exterior home repairs for low and moderate income homes across Wayne County.



The **Adult and Family Literacy program** is dedicated to developing skills in reading, math and computers, for adult learners and their families, in order that they may achieve success at home, at work, and in the community.



Financial literacy is provided through the **Bank on Wayne** program that provides instruction in budgeting, banking, and managing credit. Bank on Wayne encourages participants to operate within the financial mainstream and avoid costly alternative financial services.



As part of the Boy Scouting program, boys in our **Community Troop**, improve their academic performance and social competencies through rank advancement, merit badge completion and Learning for Life courses at no cost to their families.



Individuals are able to remain in their home, receive check-ups and receive nutritious meals from Meals on Wheels through the **Nutrition for the Elderly**.



First-time youth offenders have an opportunity to earn a chance to improve their future through **Restorative Justice Program**. Participants follow a structured process where their peers review their case, pass judgment and issue an appropriate sentence. Through parental and teen participation, participants are able to avoid criminal records by successfully completing their sentence.



Girls living in West Haven, Fairview and Lincoln Apartments have a safe place to be mentored as they grow into community citizenship! Your investment in the work of United Way of Wayne County has given these young ladies the chance to belong to the three Girl Scout's **Community Troops**, and to experience the benefits of being a scout.

Some of the opportunities these girls now have include arts and crafts, agriculture trips, Disney on Ice adventures, and STEM education.



The **Domestic Violence Victim Support program** provides victims of domestic violence, neglect or sexual assault a safe shelter, emergency services, crisis intervention, food and clothing, safety planning, emergency cell phones, danger and lethality assessment and if needed, legal as well as financial assistance.



Some students require more intensive and individualized instruction to learn some skills and material. In **Tutor to the Top**, one-on-one help is proven to be most effective. Each child is matched with a tutor who will stay with him/her throughout instruction. All tutors are experienced educators in Wayne and Duplin Counties with full background checks. Sessions are always conducted with a minimum of two adults present at all times.



NC 211 is an information and referral service provided by United Way of Wayne County. Families and individuals can dial 2-1-1 or 1-888-892-1162 to obtain free and confidential, multilingual information on health and human services and resources across North Carolina.



Over 50K Customers Save on Prescriptions Each Week Using Free SingleCare® Discount Cards. Save Up to 80% on Prescriptions at Over 35,000 Pharmacies Nationwide with a Free Rx Coupon. A proud United Way partner.



NC 211



**HELP
STARTS
HERE**



**LA AYUDA
COMIENZA
AQUÍ**



DIAL 2-1-1
or visit nc211.org

MARCA 2-1-1
o visita nc211.org

GET CONNECTED TO...

Food • Housing • Utilities • Health Care
Legal Services • Transportation • And more

CONÉCTATE A...

Alimentos • Vivienda • Atención médica
Servicios Legales • Transporte • Y más



NC 211 is powered
by local United Ways
across North Carolina



United Way of North Carolina



NC 211 es un servicio
de United Ways locales
en Carolina del Norte



United Way of North Carolina

FREE • CONFIDENTIAL • MULTILINGUAL

Dial 2-1-1 or
(888) 892-1162
24/7/365



North Carolina

GRATIS • CONFIDENCIAL • MULTILINGÜE

Marca 2-1-1 o
(888) 892-1162
24 horas del día



North Carolina

Frequently Asked Questions

It's only natural for people to have questions, especially when its pertaining to their money. Here are some Frequently Asked Questions UWWC gets throughout the year. If you have any additional questions, please reach out to savannah@unitedwayne.org

Q: Why should I give to United Way of Wayne County?

The United Way of Wayne County fights for the Health & Wellness, Financial Stability, Basic Needs and Education for all of Wayne County residents. A gift of any size helps fund programs and help the most vulnerable in our community. When we thrive as individuals or families, our community in turn thrives.

Q: Where does my investment go?

United Way of Wayne County partners with 14 nonprofits across Wayne County that make up 20 Funded Programs. Your investment ensures those programs are available for the residents of Wayne County tomorrow.

For more information or to see a full list of our Funded Partners please visit [HERE](#) or contact our office at savannah@unitedwayne.org or call 919-735-3591

Q: If I stop working for my current employer, what happens to my payroll-deducted pledge?

Since your employer will no longer be providing a paycheck from which to deduct your pledged amount, your contributions will end. Your pledge does not automatically get routed to your new place of employment or to your home address. If you contact us, we can coordinate a different way for your to pay the remainder of your pledge.

Q: When do my payroll deductions begin?

When you pledge in 2023, the first payment doesn't start until 2024. Since each company is different, please consult your HR administrator for what their policy states.

Q: I can't afford to give to UWWC right now, what can I do?

Every gift to United Way of Wayne County, no matter the size, makes a difference right here in our community. Many people find that giving through payroll deduction allows them to make a contribution that fits their budget. One of the great advantages of giving through United Way is being part of a community wide effort that combines all our giving to make the greatest impact on meeting the needs of the residents in our community.

Monetary gifts aren't the only way to give back, volunteering is just as valuable. Sharing the UWWC message on social media and to your friends and family are other ways to give back as well.

To discuss volunteer options in Wayne County, please contact pilar@unitedwayne.org OR call 919-735-3591

Q: The government is providing all the needed services through our taxes.

Tax-supported services are primarily in the field of housing, education, unemployment benefits and public health. They are limited by the law in what kinds of services they can provide. United Way funded programs are preventing delinquency; restoring broken lives so people can again become functional, productive citizens.

Q: My employees have been affected by COVID-19 financially, I'm uncomfortable asking them to give.

Almost universally, people want to help others. Even a small amount each week can give an employee a sense of belonging to a larger community- of making a difference. United Way of Wayne County feels that all employees should be given an opportunity to express themselves through charitable giving. Often, employees at the lower end of the pay scale are more likely to know what its like to need health and human services and may better understand and appreciate UWWC's impact locally.

UWWC shares the work investors are able to achieve during the campaign presentation. Although someone may not be in a place financially to give, they may know someone who needs resources or may need them personally. The more the message and mission of UWWC is heard, the more local people can be helped.

For any additional questions, please contact savannah@unitedwayne.org OR call 919-735-3591



Community Campaign Committee Volunteer Roles

Committee Chair - Bethany Perry

The Committee chair reflects the values of UWWC, is a leader and is dedicated to the success of our community campaign and our United Way's mission and strategic direction.

- Recruits community volunteers
- Directs the campaign
- Motivates - inspires
- Provides leadership to the campaign committee.
- Conducts report meetings throughout the campaign period
- Works alongside Executive Director & reports to Board of Directors

Board of Directors Involvement

- Visits all Major Investors in a timely manner – February-April to thank investors
- In collaboration with the Campaign Chair, establish campaign goal
- Share with community leaders the UWWC goals, how UWWC invests their contributions while building and keeping long-term relationships

Loaned Executive Team

- Volunteers manage 2-4 employee campaigns. UWWC staff supported
- Tied to the Campaign Coordinators and receive direction from the cabinet members
- Recruited May-July with orientation in August 23rd, 2023
- Volunteer involvement spans August - December

Campaign Volunteers

- Volunteers to support campaign for specific investor mapping such as residential, leaders in investing, special events, and small business
- Recruited May-July with individual orientation
- Volunteer involvement spans August-December

Employee Campaign Coordinators

- Volunteers to conduct employee campaign at their company/organization.
- Recruited May-July with orientation in August
- Volunteer involvement spans August – December

School Coordinators

- Volunteers to conduct employee campaign at their school
- Recruited July-August with orientation in October
- Volunteer involvement spans August-November



Commonly Used United Way of Wayne County Terms

INVESTOR- Person or company who donates monetarily to UWWC

MAJOR INVESTOR- Business or facility that hosts an employee campaign

LE- Loaned Executive, a professional community volunteer tasked to assist with the current campaign

FUNDED PROGRAM- A program from a Partner Agency that UWWC partially funds

FUNDED PARTNER- Agency that facilitates all the UWWC Funded Programs

COMMUNITY INVESTMENT CAMPAIGN- UWWC's annual fundraising event. We connect with local businesses, professionals, and residents to invest in UWWC, the money raised during this is how we fund the Funded Programs

CAMPAIGN CHAIR- A UWWC volunteer tasked with leading the Community Campaign effort, the LE's main POC

ED- Executive Director, the UWWC full time staff member who oversees the entire UWWC operation

RDD- Resource Development Director, the UWWC full time staff member tasked to handle all campaign paperwork, scheduling, and relationship management of our MI and community

BOD - Board of Directors, a volunteer group of community members tasked with maintaining accountability for UWWC, important decision making and leading our community efforts with UWWC staff

FAIR SHARE- A set investment amount for UWWC Employee Campaign investors of 1 hours pay per month or .6% of salary employees

FAIR SHARE CHALLENGE- an initiative for Fair Share investors to win \$10,000 by giving their qualifying investment during their Employee Campaign



2023 Board of Directors Contact Information

Andrea Ogburn, Family Engagement
& Communications Coordinator
Wayne County Public Schools
919.739.6848
avfreile@wanyecc.edu

Bernadette Carter-Dove, Human
Resources Director
City of Goldsboro
214 N. Center Street
Goldsboro, NC 27530
919.580.4357 (cell) 919.222.6659
bdove@goldsboronc.gov

Bethany Perry, UWWC Campaign
Chair
1906 E. Walnut St.
Goldsboro, NC 27530
919.921.6027
bethany@unitedwayne.org

Dave Tayloe, MD
Goldsboro Pediatrics PA
2706 Medical Office Place
Goldsboro, NC 27530
919.734.4736 (cell) 919.922.7951
dtayloe@goldsboropedics.com

David Perry, CEO
Goldsboro Builders Supply
PO Drawer E
Goldsboro, NC 27533
919.734.4071 (cell) 919.922.0073
dperry6961@aol.com

Donna Phillips, Library Director
Wayne County Public Library
1001 East Ash St.
Goldsboro, NC 27530
919.735.1880 (cell) 919.221.1299
donna.phillips@waynegov.com

Eddie Edwards, Office of State in
Human Resources
State of NC Office of the Governor
105 Harding Place
Goldsboro, NC 27534
919.221.4964
eddieedwards1911@yahoo.com

Ken Derksen, Communications & PR
Wayne County Public Schools
2001 E. Royall Avenue
Goldsboro, NC 27534
kenderksen@wcps.org

Lisa Musselman, President
Crawford-Henderson Insurance
202 N. Spence Ave.
P.O. Box 10885
Goldsboro, NC 27532
919.778.9400 (cell) 919.738.7222
lisam@crawhen.com

Liza Govan, Marketing Director
Curtis Media
2581 US Highway 70 W
Goldsboro, NC 27530
919.750.1115
lgovan@curtismedia.com

Melissa Throm, State Farm Insurance
303 N. Spence Avenue
Goldsboro, NC 27534
919.648.2302 (cell) 919.330.3099
melissa.throm.vacbsl@statefarm.com

Pamela Pearce, PHR, Sr. HR Manager
U.S. Cargo Systems
500 Gateway Drive
Goldsboro, NC 27530
919.705.2421 (cell) 919.665.7093
ppearce@uscargosystems.com

R. Walter Krentz, Jr., VP/City Executive
Local First Bank
431 N. Spence Ave.
Goldsboro, NC 27534
919.751.0546 (cell) 919.922.5691
walterk@localfirstbank.com

Selena Worrell, Vice President of
Operations
Worrell Contracting Co
201 N. Center Street
Goldsboro, NC 27530
919.288.1405
sworrell@wcci-nc.com

United Way of Wayne County Professional Staff

Sherry Archibald, Executive Director/Secretary

Savannah Lambert, Resource Development Director

Pilar Parks, Community Investment & Engagement

Sheri Pietrangelo, Office Manager

Dawn Amory, CFO

sarchibald@unitedwayne.org

savannah@unitedwayne.org

pilar@unitedwayne.org

sheri@unitedwayne.org

finance@unitedwayne.org

IT STARTS WITH

UNITED WAY
OF WAYNE COUNTY



**2803 Cashwell Drive
Goldsboro, NC 27532
919-735-3591 (P)
919-735-3654 (F)
unitedwayne.org**



United Way of Wayne County